

# Download and Install Eclipse Scout

Scout Team

Version 5.2.0-SNAPSHOT

# Table of Contents

Get the Package.....	1
Install Scout.....	2
What's Next? .....	4



This document is referring to a past Scout release. Please click [here](#) for the recent version.

Looking for something else? Visit <https://eclipsescout.github.io> for all Scout related documentation.

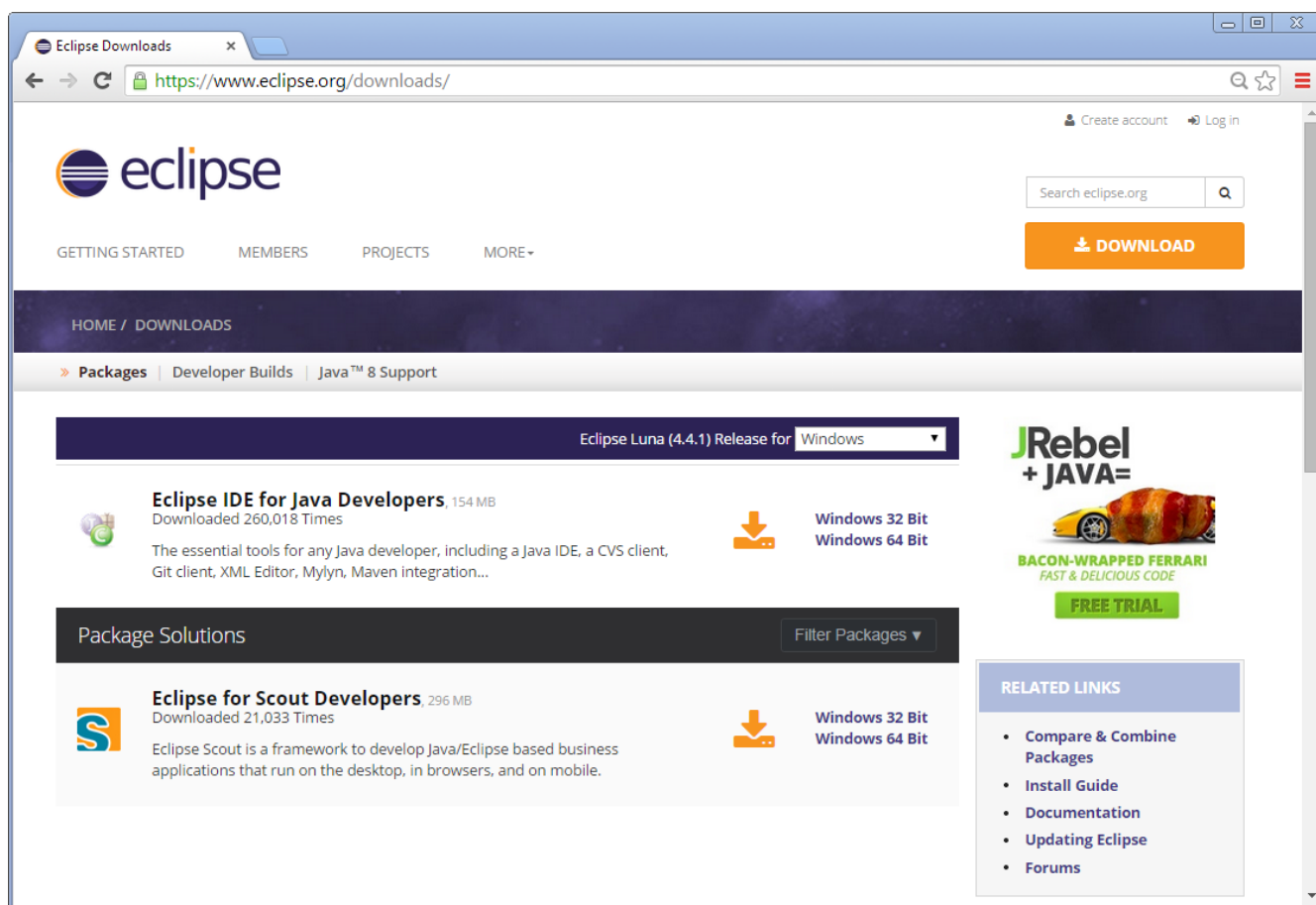
This describes how to install an Eclipse IDE ready to create scout Applications.

## Get the Package

Before you download Scout make sure that you have a working Java Development Kit (JDK) of version 7 or 8. To download Eclipse Scout visit the official Eclipse download page.

<https://www.eclipse.org/downloads/>

The download page then looks as shown in [Figure 000](#). If the download page shows the wrong platform, manually select the correct platform in the dropdown list.



*Figure 1. The Eclipse download page. The platform filter is set to Windows and the available Packages are filtered for Scout.*

The Eclipse Scout package is available in the form of a 32 bit and a 64 bit package as shown in [Figure 000](#). To download the correct package, make sure to matche your JDK installation. You can check your installation on the command line as follows.

```
console-prompt>java -version
java version "1.7.0_55"
Java(TM) SE Runtime Environment (build 1.7.0_55-b13)
Java HotSpot(TM) 64-Bit Server VM (build 24.55-b03, mixed mode)
```

If the output explicitly mentions the 64 bit installation as shown in the example above, you have a 64 bit installation and you need to download the 64 bit Eclipse Scout package. Otherwise, you have a 32 bit JDK installed and you need to pick the 32 bit package of Eclipse Scout. After the package selection, confirm the suggested download mirror as shown in [Figure 000](#).

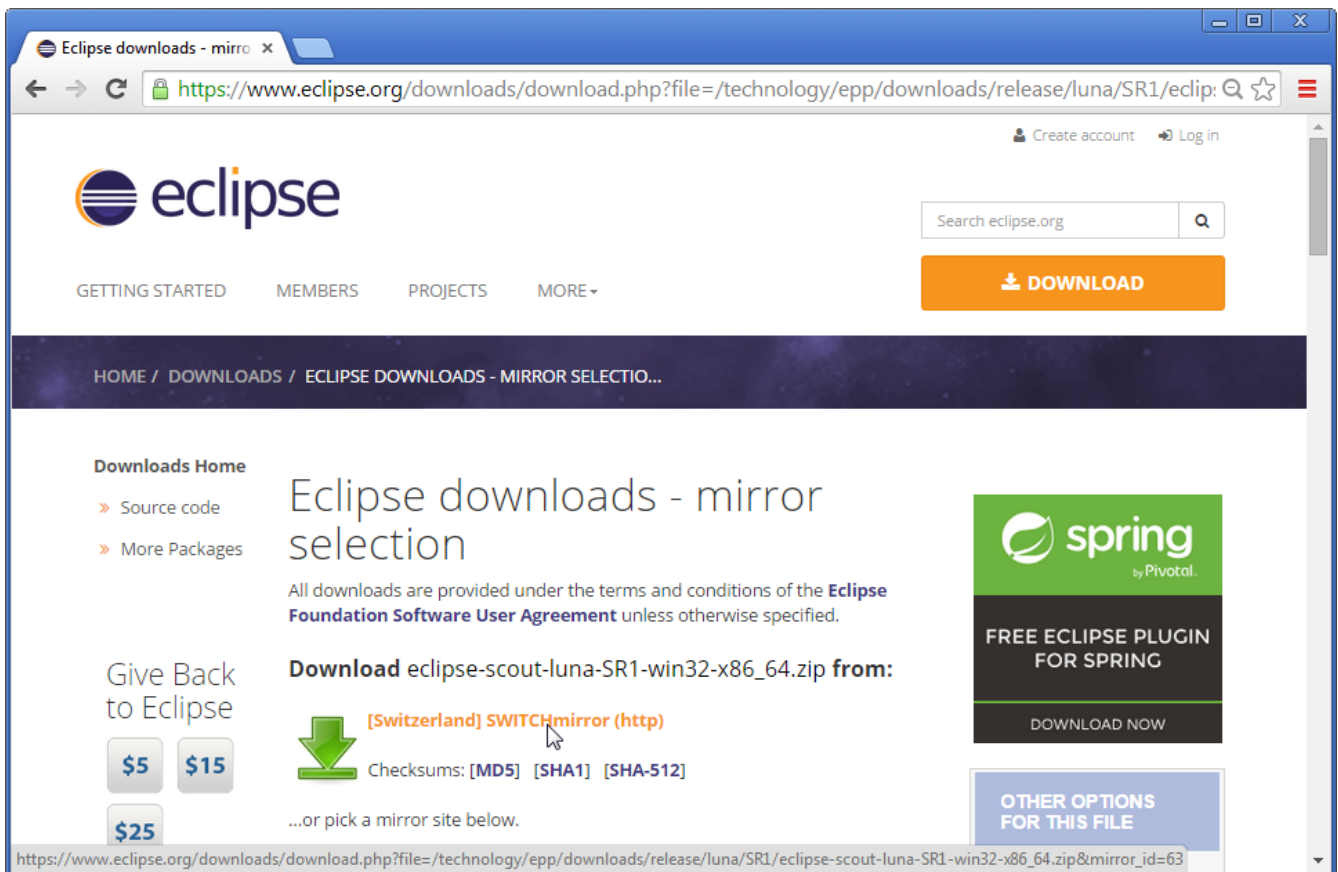


Figure 2. Downloading the Scout package from a mirror.

## Install Scout

As the Scout package is a simple ZIP (or tar.gz) file, you may unpack its content to a folder of your choice. Inside the eclipse sub-folder, you will then find the Eclipse executable file, such as the `eclipse.exe` file on a Windows platform. Starting the Eclipse executable brings up the workspace launcher as shown in [Figure 000](#).

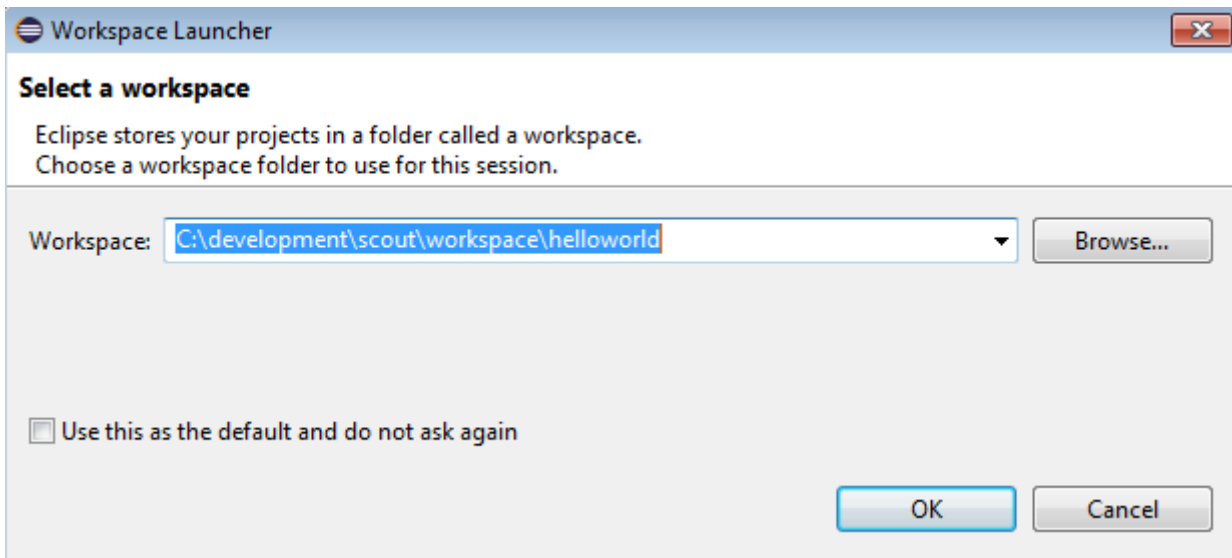


Figure 3. Starting the Eclipse Scout package and selecting an empty workspace.

Into the *Workspace* field you enter an empty target directory for your first Scout project. After clicking the [ **Ok** ] button, the Eclipse IDE creates any directories that do not yet exist and opens the specified workspace. When opening a new workspace for the first time, Eclipse then displays the welcome screen shown in [Figure 000](#).

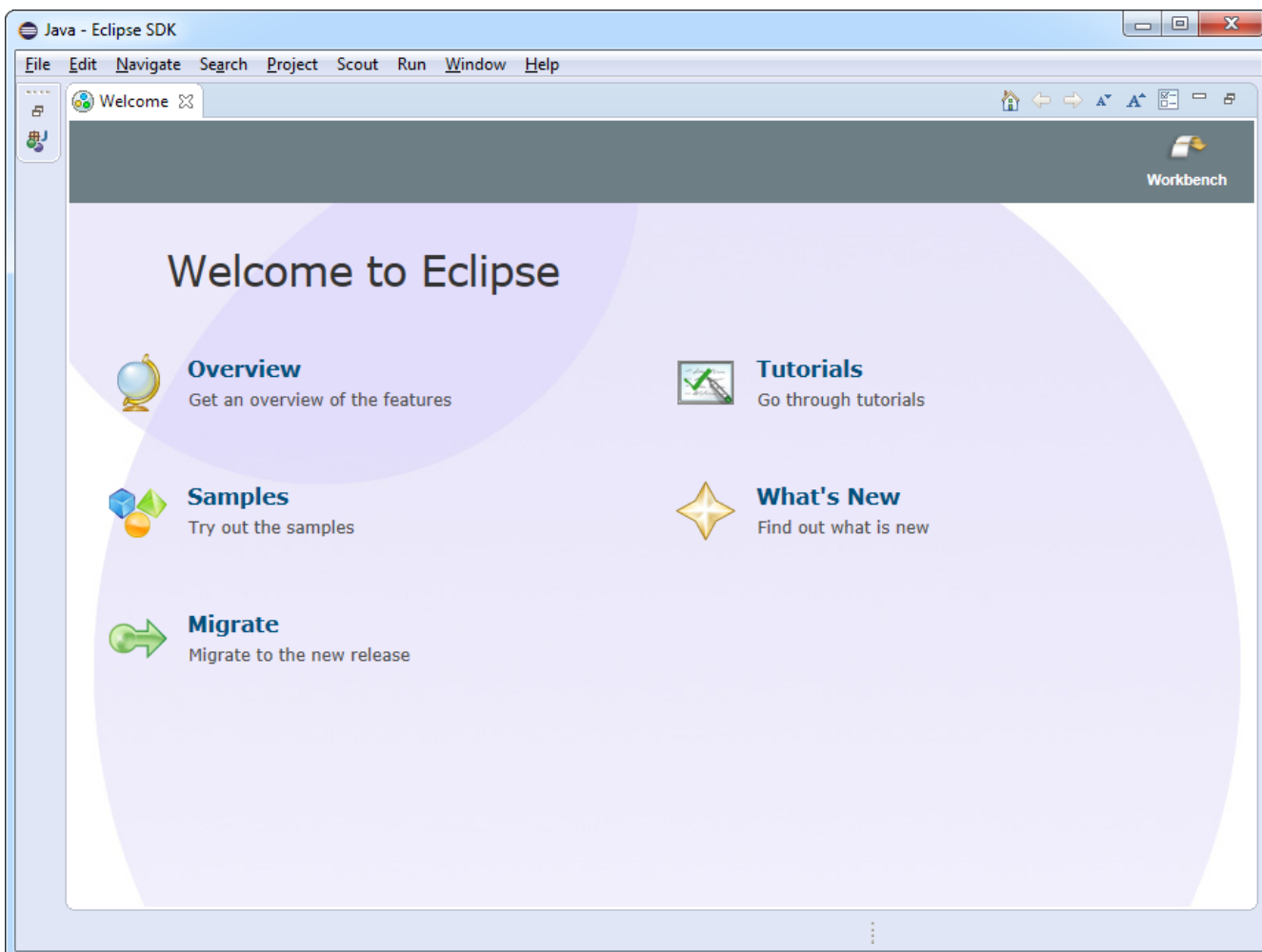


Figure 4. Eclipse welcome screen.

To close the welcome page click on the *Workbench* icon in the top right corner. As a result the empty Java perspective is displayed according to [Figure 000](#).

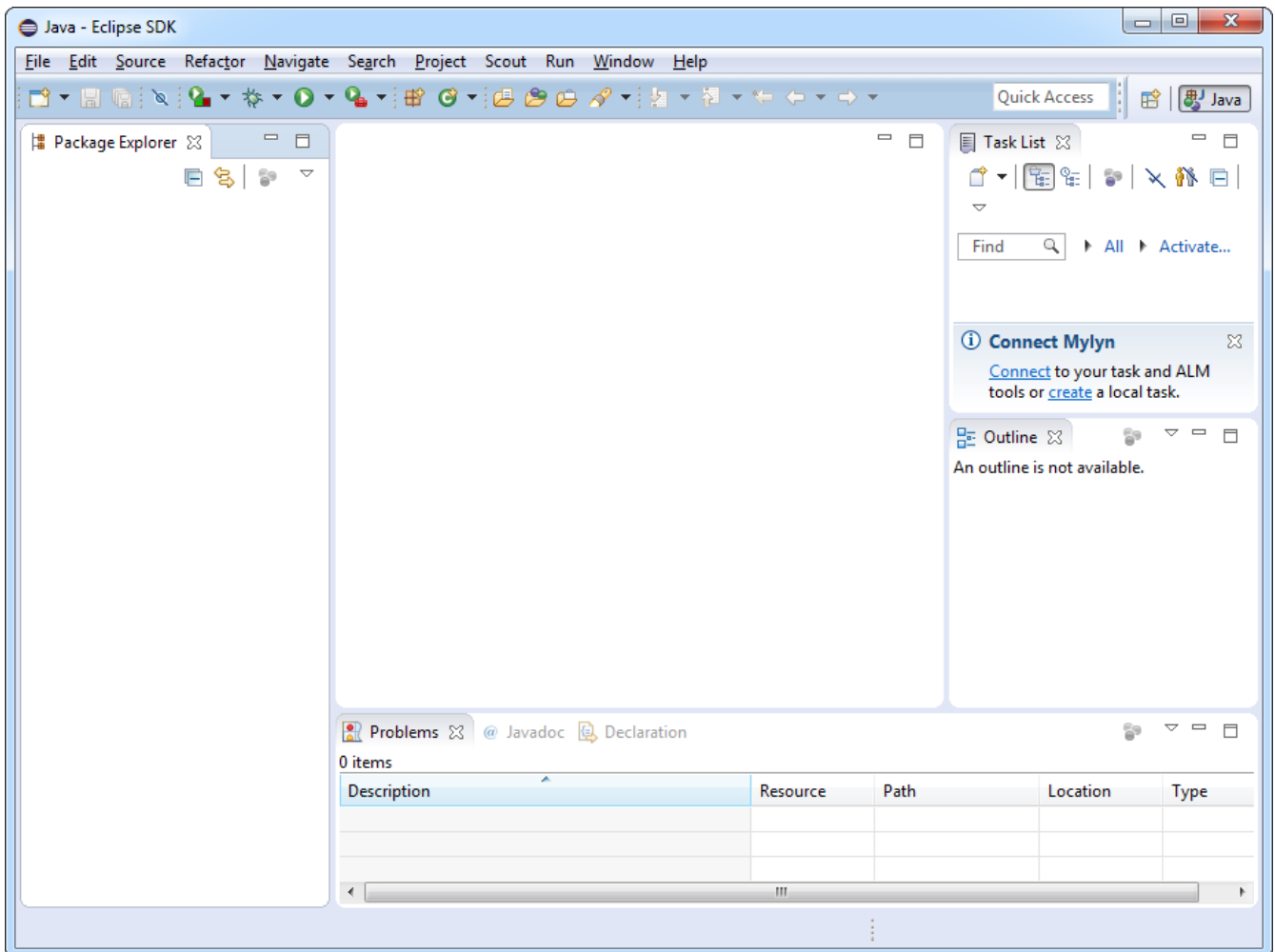


Figure 5. Eclipse started in the Java perspective.

Congratulations, you just have successfully completed the Eclipse Scout installation!

## What's Next?

With your working Scout installation you are now ready to create your first Scout application. Go ahead and follow the 'Hello World!' tutorial.



Do you want to improve this document? Have a look at the [sources](#) on GitHub.